



Flory Knits - floryknits@yahoo.com

## Shetland Shawl - knit from the center out



**Finished Size:** about 52 x 44 inches (can be blocked bigger)

**Yarn:** One cone "no name" wool/cotton/silk; 2000 yards per 8 ounces

**Needles:** double points and 22 inch (longer as needed) circular size US 6 (4.0 mm)

**Gauge:** not an issue

### Center Square

Temporary cast-on 96 stitches; slip all first stitches with yarn in front as if to purl.

Work row 1 of Print O' the Wave Pattern (set up row); turn, purl one row.

Work pattern from chart (rows 3 to 14 inclusive) 15 times.

Work rows 3 to 13, do not turn; do not cut yarn.

### Border

Place marker at end of row (make this one distinctive to mark the beginning of the round), pick up and knit 96 stitches down the left side of panel; place marker. Knit across cast-on row; place marker. Pick up and knit 96 stitches up the right side of the panel; place marker. Knit across top of panel increasing 8 stitches evenly spaced; 96 stitches per side. Purl one round.

The increases are worked in the corner, on knit rounds, thus: yo, k1, slip marker, k1, yo.

Even numbered rounds are purled.

Round 1: Work a round of eyelets thus: [k1, \*(yo, k2tog); repeat from\*, end yo, k1] 4 times; 97 stitches per side.

Rounds 3, 5, 7, 9, 11, 13: (k1, yo, knit across, end yo, k1) 4 times; 109 stitches per side at the end of round 13.

Round 15 to end of Border: Work rounds 1 to 80 (inclusive) of "Rosettes Chart"; 189 stitches per side.

Somewhere over the next 5 rows, increase 1 stitch per side.

Repeat rounds 3, 5, 7, 9 & 11; end with purl one round; 200 stitches per side. Do not cut yarn.

### Edging

Cast-on 13 stitches and work edging from chart. Once all four sides are complete; join, graft or sew the live stitches to the cast on. Block shawl, enjoy!





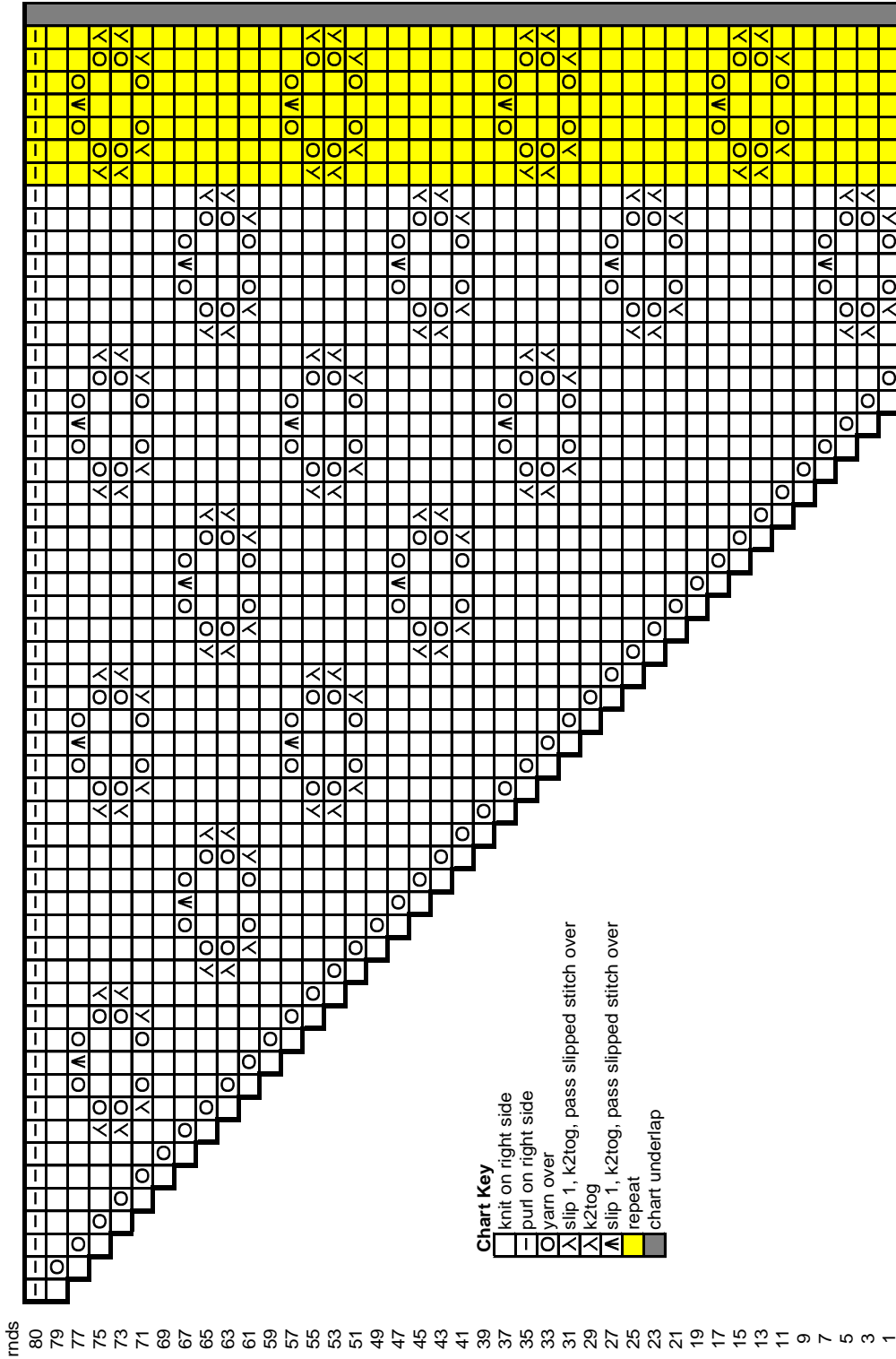
**Shawl Border Pattern - "Rosettes" - multiple of 14 stitches + 7 (plus 2 edge stitches)**

Pattern is worked in rounds; chart is one fourth the border.

Even numbered rounds (only the last even round, #80, is shown in the chart) are purled.

First round worked over 109 stitches per side; 189 stitches at the end of round 80.

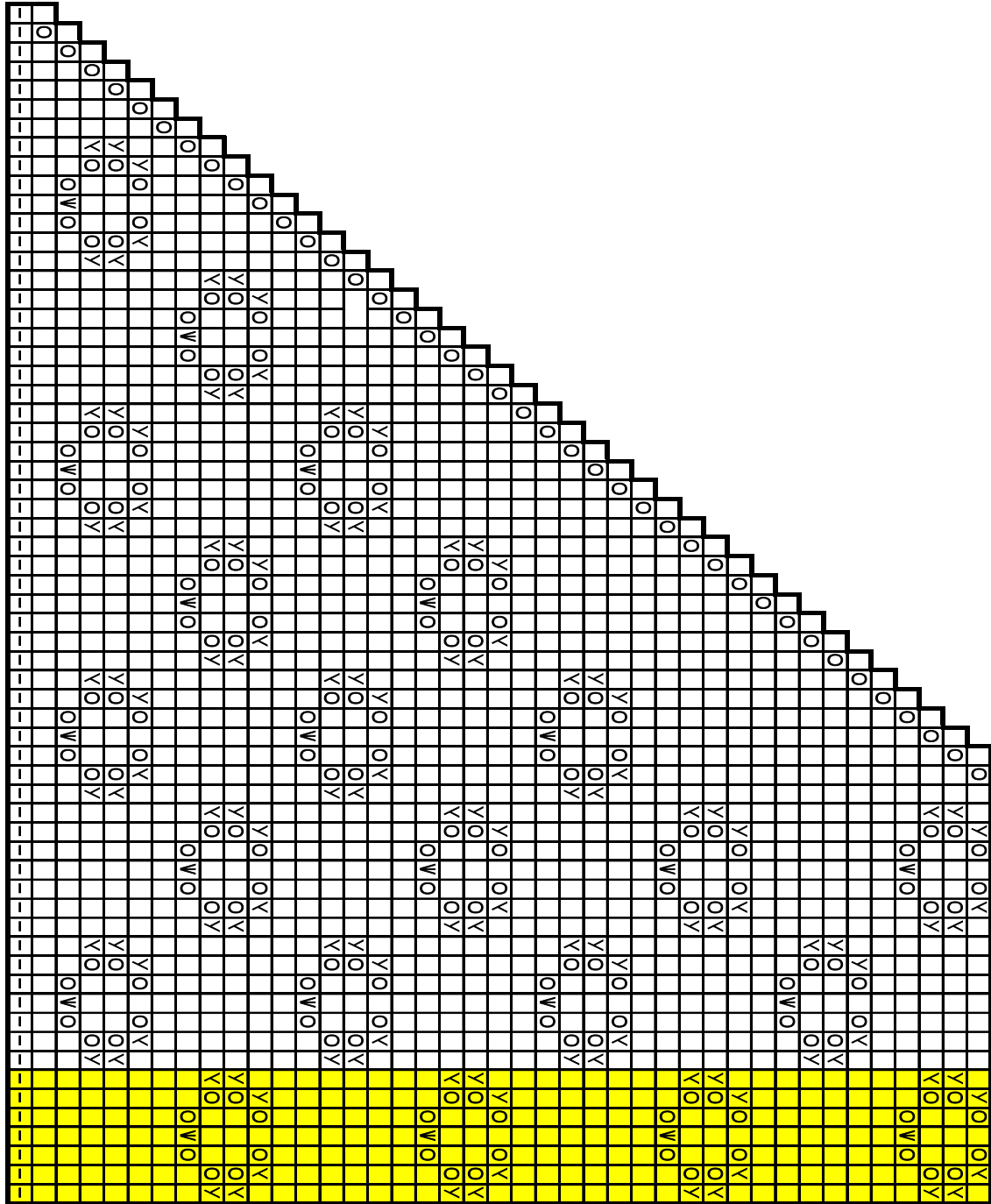
Yellow section is repeated 6 time across per side.



mnds  
80  
79  
77  
75  
73  
71  
69  
67  
65  
63  
61  
59  
57  
55  
53  
51  
49  
47  
45  
43  
41  
39  
37  
35  
33  
31  
29  
27  
25  
23  
21  
19  
17  
15  
13  
11  
9  
7  
5  
3  
1

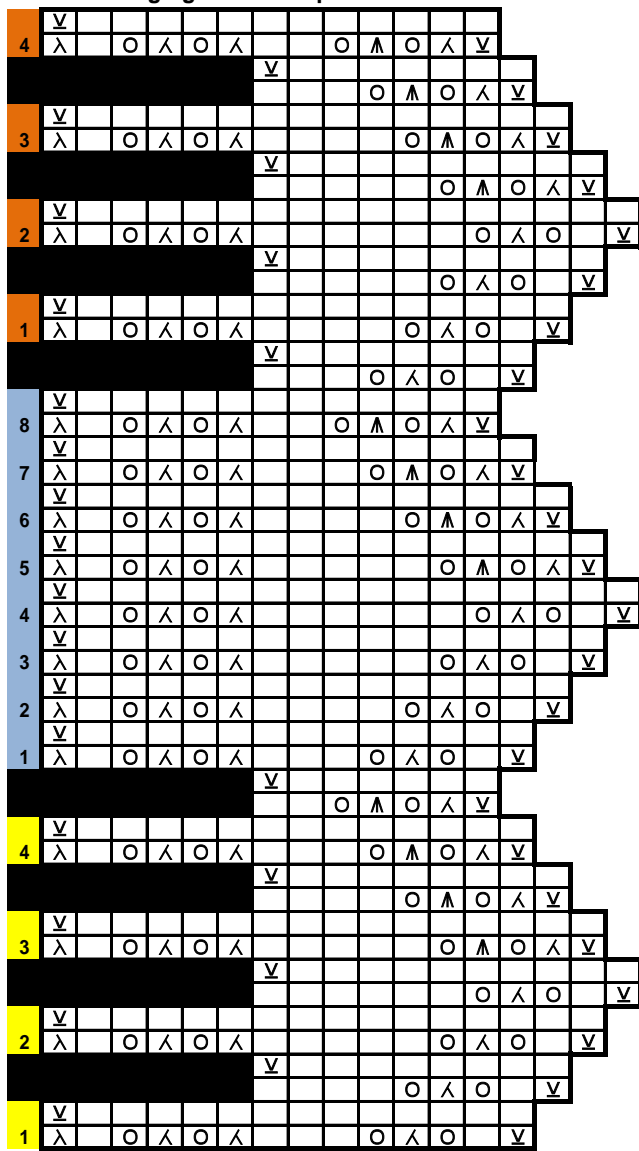


rnds 80 79 77 75 73 71 69 67 65 63 61 59 57 55 53 51 49 47 45 43 41 39 37 35 33 31 29 27 25 23 21 19 17 15 13 11 9 7 5 3 1





**Shawl Edging - 16 row repeat**



**Chart Key**

- knit on right side and on wrong side
- no stitch
- / k2tog
- yarn over
- / slip one, k2tog, pass slipped stitch over
- / knit last stitch from chart with 1 stitch from shawl
- / slip knitwise with yarn in back
- four stitches before corner marker
- repeat this section 24 times
- first four stitches after corner marker