



Flory Knits - floryknits@yahoo.com

Lace Pi are Square Shawl

The original garter stitch pattern can be found in *Knitting Around* by Elizabeth Zimmerman, published by [Schoolhouse Press](#)



Yarn: about (12 oz) 2000 yards of fingering weight yarn. I used a one pound (2800 yards) cone of Brown Sheep Nature Spun, 100% wool, color N21 Mallard; had about 3.5 ounces left over.

Needles: 24 inch long, US8 (5mm) circular needle.

You may want to also have a set of double points in the same size for working the lace and I-cord edgings.

Other: lots of markers, tapestry (blunt) needle to sew in the ends, blocking materials.

Gauge: not an issue. The shawl, as I made it, is huge. The back is almost 40 inches long from neck to hem. If you want the shawl to be smaller, use a smaller needle and/or do not work all the rows (48 ridges, 96 rows) of the last section.

Notes on construction: The pattern is all in chart form.

The first two lace patterns are from Barbara Walker's *A Treasury of Knitting Patterns*. The lace in chart 2 is Little Leaf Stripe, page 196; the lace in chart 3 is Miniature Leaf Pattern version 1, page 215. The third lace pattern, chart 4, is Candlelight Pattern from Sharon Miller's *Heirloom Knitting*, page 66. The border pattern, chart 5, is a pattern I had in a piece of paper floating around, not a clue as to where it came from.

It is a good idea to place markers after every repeat; it is easier to check for mistakes and to know where you are in the pattern. I slipped all first stitches as if to knit with yarn in back. If you choose to do the same, keep in mind that the charts do not account for this, they have all first stitches knitted.

After the body of the shawl is completed, stitches are cast on (cable cast on works best) and the bottom edging is worked perpendicularly and attached. Once the last row of edging is worked, do not bind off. With the free end of the circular needle, pick up the bumps from the garter stitch edge, pick up about 20 stitches from the original back of the neck cast on, pick up the loops from the bumps down the other edge and about 6 loops from the lace cast on edge (*skip one, pick two; repeat from *, end pick two).

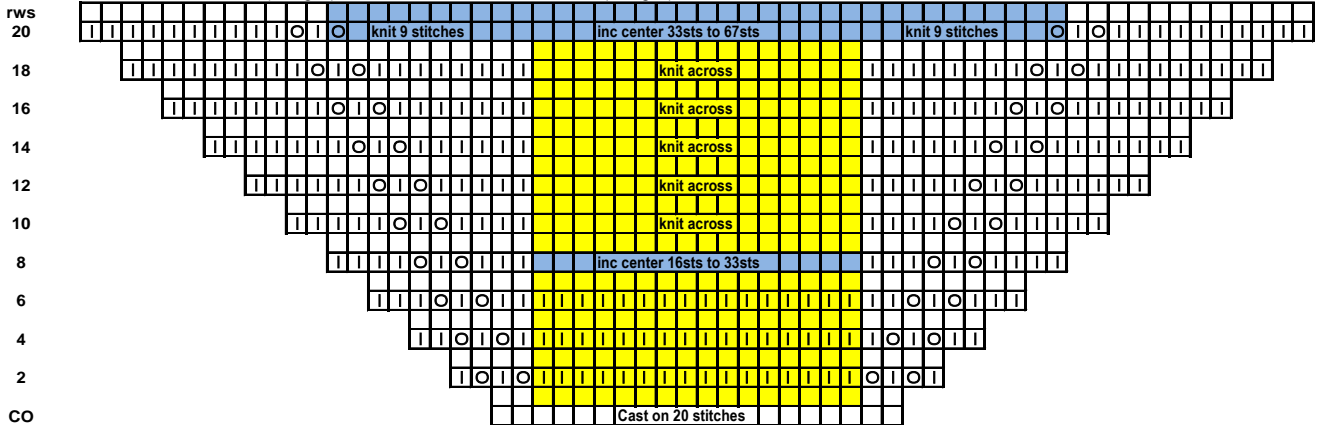
To finish the shawl: Cast-on 4 stitches; work an I-cord edge attaching it as you go along. On border live stitches, every third time, attach the I-cord to two of the live stitches.

Weave in all ends, block and enjoy!



Chart 1

The first chart shows (almost) every row/stitch. Even rows are right side; all wrong (odd) side rows are knit across.
 The shawl is begun per EZ's instructions with two changes. Instead of increasing from 16 to 32 stitches (and from 32 to 64), increase from 16 to 33 (and from 33 to 67) - chart's blue rows.
 Row 8 (and 20) center section - (yarn over, knit one) rep 16 (33) times, end yarn over; 33 (67)sts
 Row 9 (and 21) - knit across
 Cast on 20 sts, work 6 rows (3 ridges), increase center sts; work 12 rows (6 ridges), increase center sts.

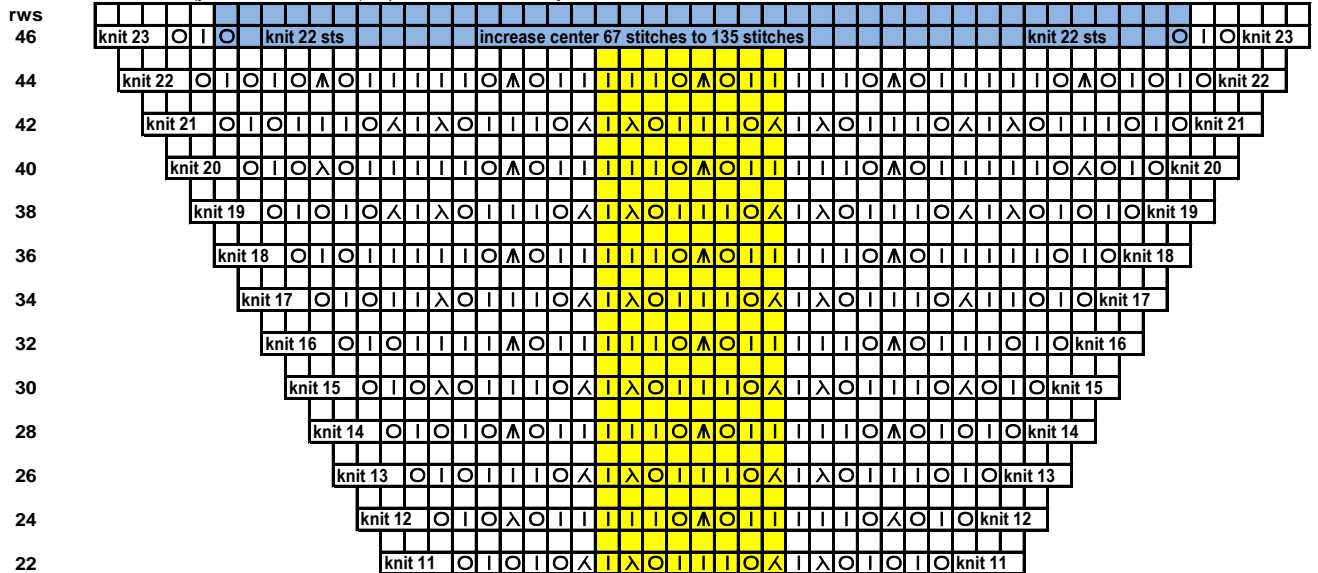


Key for all charts

- knit on right side
- knit on wrong side
- yarn over
- k2tog - knit two together
- SSK or SKP - makes no difference
- s2kpsso - slip two together as if to knit, knit one, pass slipped stitches over

Chart 2

The garter stitch side wedges continues as per EZ's instructions.
 The center back lace insert begins in this chart and continues in the following charts.
 Wrong side rows are knit throughout.
 24 rows (12 ridges) section - repeat yellow section 10 times across.
 Increase thus: (yarn over, knit one) repeat 67 times; end yarn over



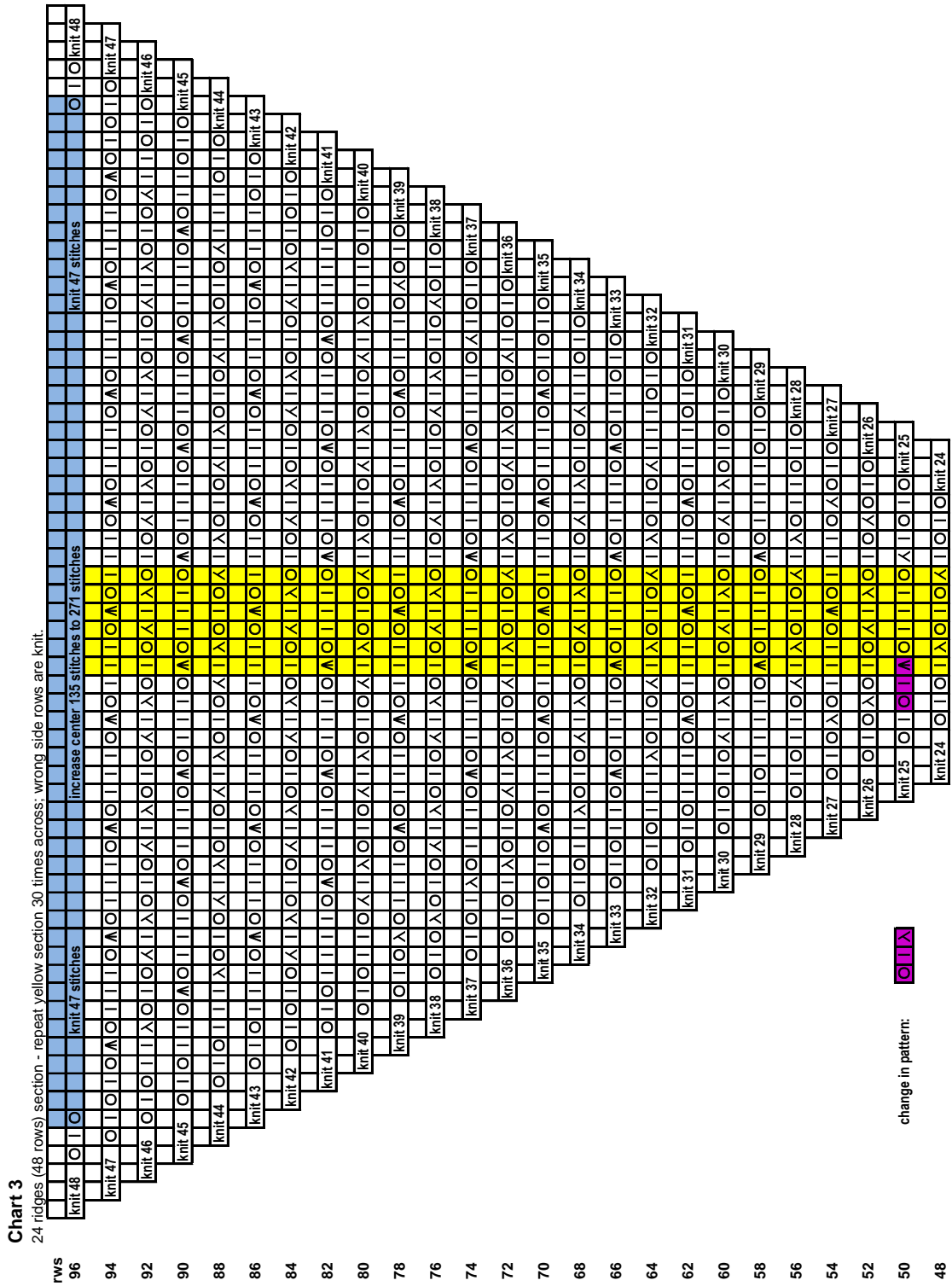
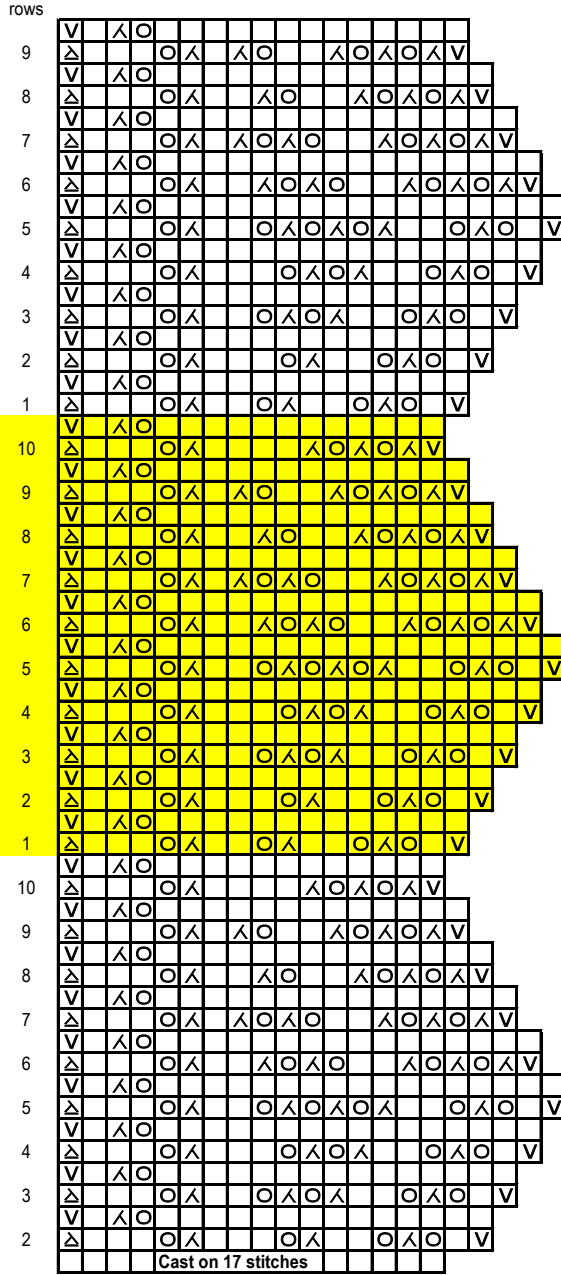




Chart 5 - Shawl Border

Worked over 659 stitches.



Key

- pattern repeat, work 64 times
- knit on right side and on wrong side
- yarn over
- knit two together
- attach* last edging stitch to corresponding shawl stitch
- slip knit wise with yarn in back

*SSK - slip, slip, knit two together or
SKP - slip, knit, pass slipped stitch over