



Aran Jumper

Yarn: Berrella "4", 100% acrylic, 3.5 oz, 220 yards, 10 skeins

Needles: US 5 (3.75 mm) for ribbing and collar;

US 7 (4.5 mm) for sleeves and body

Gauge: Pick a yarn, make a swatch, and figure your gauge. Measure your victim and figure out how many stitches you are going to need to end up with the proper size.

To knit: The body (make 2) has background stitches (reverse stocking stitch, seed stitch, moss or double moss stitch; take your pick), panel A with 33 sts, panel B with 46 sts, and panel C with 33 sts. Cast-on for the body and work the ribbing for about 20 rows (or not), increase to prevent puckering (about 24 sts). Work the pattern from the charts adding as many background stitches as you may need to give you the size you want. Work as many multiples of the patterns as needed for the length you want. On the last two rows, bind-off at the beginning of the two rows leaving the center 42 stitches on hold for the neck.

Cast-on for the sleeve (make 2), work ribbing for about 20 rows (or not), increase to prevent the pattern from puckering (about 12 sts). Work the sleeve chart over 46 sts plus as many background stitches as you may need; increasing 2 stitches every other right side row. I did the increases were the background meets the cable panel, my choice, did not like how the increases looked in the background stitch. Work until the sleeve is long enough and then bind-off at the beginning of the next two rows leaving the center 26 sts for the shoulder strap. Make the shoulder strap as long as the shoulder is wide; leave sts on hold.

Join the sleeves to the body; sew the sleeve seam and the body seam. Transfer the shoulder and neck stitches to a smaller 16 inch circular needle (the same size as the one used for the ribbing). Make sure that the number of stitches is a multiple of 4. If this makes too big a neck, work a few decreases to adjust the size. Work 10 rounds of k2, p2 ribbing, purl one row, work 10 rounds of p2, k2 ribbing. Fold collar to the inside and tack on. Weave in all ends, block as needed.

Chart Key for Flory's Aran

Knit on right side, purl on wrong side.

Purl on right side, knit on wrong side.

S On right side rows, knit through back of loop; on wrong side rows slip stitch with yarn in front.

T2: knit 2 together, leave stitches on needle. Knit the first stitch again, slip both off needle

Twist 3 back: Slip next stitch to cable needle, hold at back. Knit 2, purl the stitch on cable needle.

Twist 3 front: Slip next 2 stitches to cable needle, hold at front. Purl 1, knit the stitches on cable needle.

Cable 4 back: Slip next 2 stitches to cable needle, hold at back.

Knit the next 2 stitches, knit the stitches on cable needle.

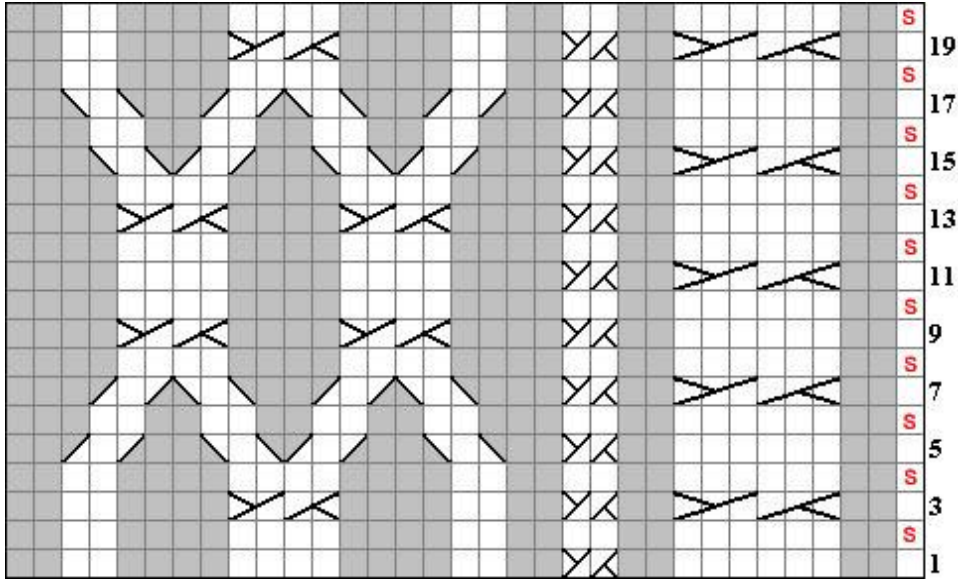
Cable 4 front: Slip next 2 stitches to cable needle, hold at front. Knit 2, knit the stitches on cable needle.

Cable 6 front: Slip next 3 stitches to cable needle, hold at front. Knit 3, knit the stitches on cable needle.

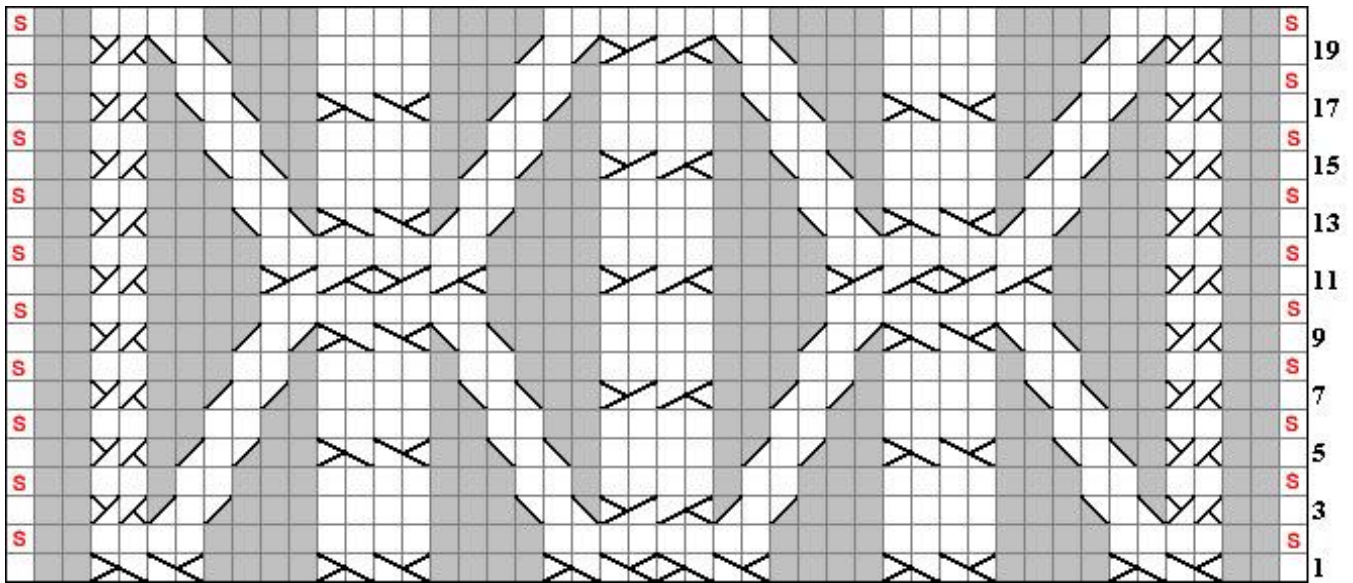
Cable 6 back: Slip next 3 stitches to cable needle, hold at back. Knit 3, knit the stitches on cable needle.



Body Panel A

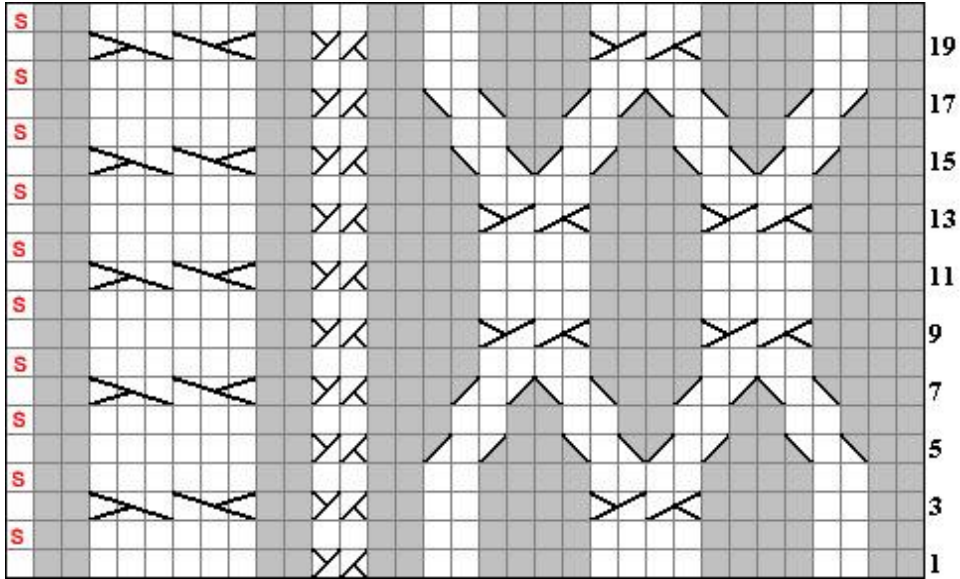


Body Panel B





Body Panel C



Sleeve Chart

